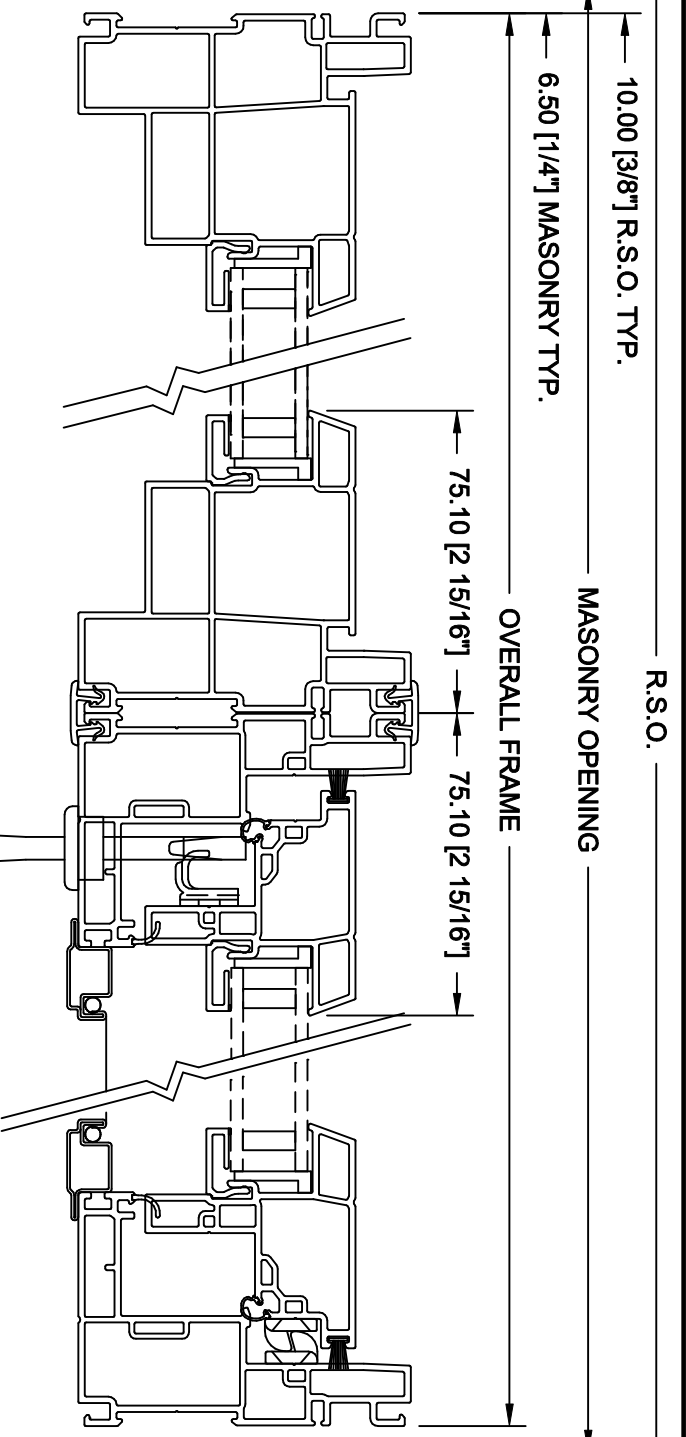


<b>PERFORMANCE RATINGS</b>	
VENT	A3
AIR	B7
WATER	B7
STRUCTURAL	C4
FIXED LITE	FIXED
AIR	B7
WATER	B7
STRUCTURAL	C5
<b>ENERGY RATINGS</b>	
INSUL ONLY	-19
LOW-E / ARGON	-6

FIXED LITE HORIZONTAL SECTION

VENTING CASEMENT HORIZONTAL SECTION



# GOLDEN VINYL CASEMENT WINDOWS

## PERFORMANCE RATINGS

## UNIT SPECIFICATIONS

- WHITE PVC #141 THROUGHOUT
- TAUPE EXTERIOR PAINT (OPTIONAL) - POLYURETHANE ACRYLIC FEATURING UV STABILIZERS, SUPERIOR ADHESION, REDUCED SURFACE HEAT BUILD-UP AND EXCEPTIONAL DURABILITY
- TRUTH FIELD-ADJUSTABLE STAINLESS STEEL HINGE
- TRUTH MAXIM MULTI-POINT LOCK IN WHITE
- TRUTH MAXIM DUAL ARM OPERATOR ON UNITS 650mm OR WIDER
- TRUTH MAXIM DYAD OPERATOR ON UNITS 649mm OR LESS
- MATCHING WHITE SCREEN WITH 4 BOLT FASTENERS
- INTERIOR STOP GLAZED
- INSUL GLASS WITH WARM EDGE SPACER TECHNOLOGY
- INTERCEPT STANDARD
- SUPERSPACER OPTIONAL

<b>MINIMUM VENT SIZE</b>	15 5/8" x 23 1/2"	<b>MINIMUM FIXED SIZE</b>	15 5/8" x 15 5/8"
<b>MAXIMUM VENT SIZE</b>	SEE PRICE PAGE	<b>MAXIMUM FIXED SIZE</b>	32.0 SQ. FT FRAME SIZE