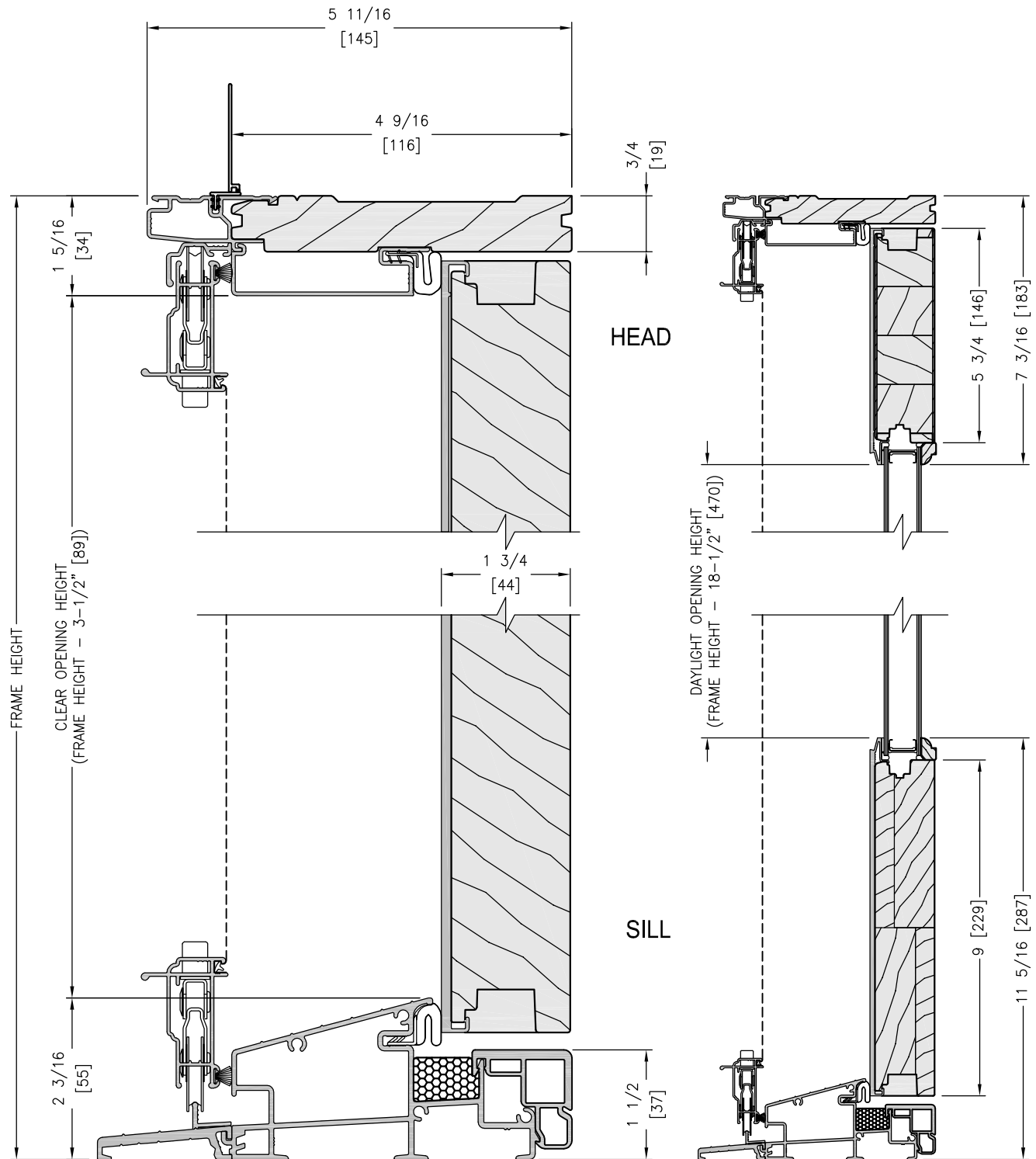
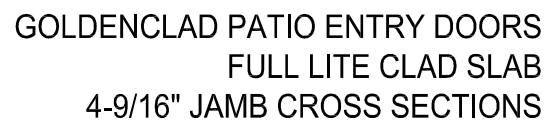


INSWING OPERATING SLAB VERTICAL SECTION



SCALE: 6" = 1'-0"

SCALE: 3" = 1'-0"



Technical drawings of the 100 Series Aluminum Window and Door Frame, showing cross-sections of the head, sill, and jamb with dimensions in inches and millimeters.

Head and Sill Cross-Sections:

- Head:** Dimensions include a total width of 5 11/16" [145], a width of 4 9/16" [116] for the main body, and a thickness of 3/4" [19].
- Sill:** Dimensions include a total width of 5 11/16" [145], a width of 4 9/16" [116] for the main body, and a thickness of 3/4" [19].
- Jamb:** Dimensions include a total height of 11 5/16" [287], a height of 9" [229] for the main body, and a thickness of 1 1/2" [37].

Clear Opening Height: The clear opening height is 3-1/2" [89].

Daylight Opening Height: The daylight opening height is 18-1/2" [470].

Frame Height: The frame height is 2 3/16" [55].

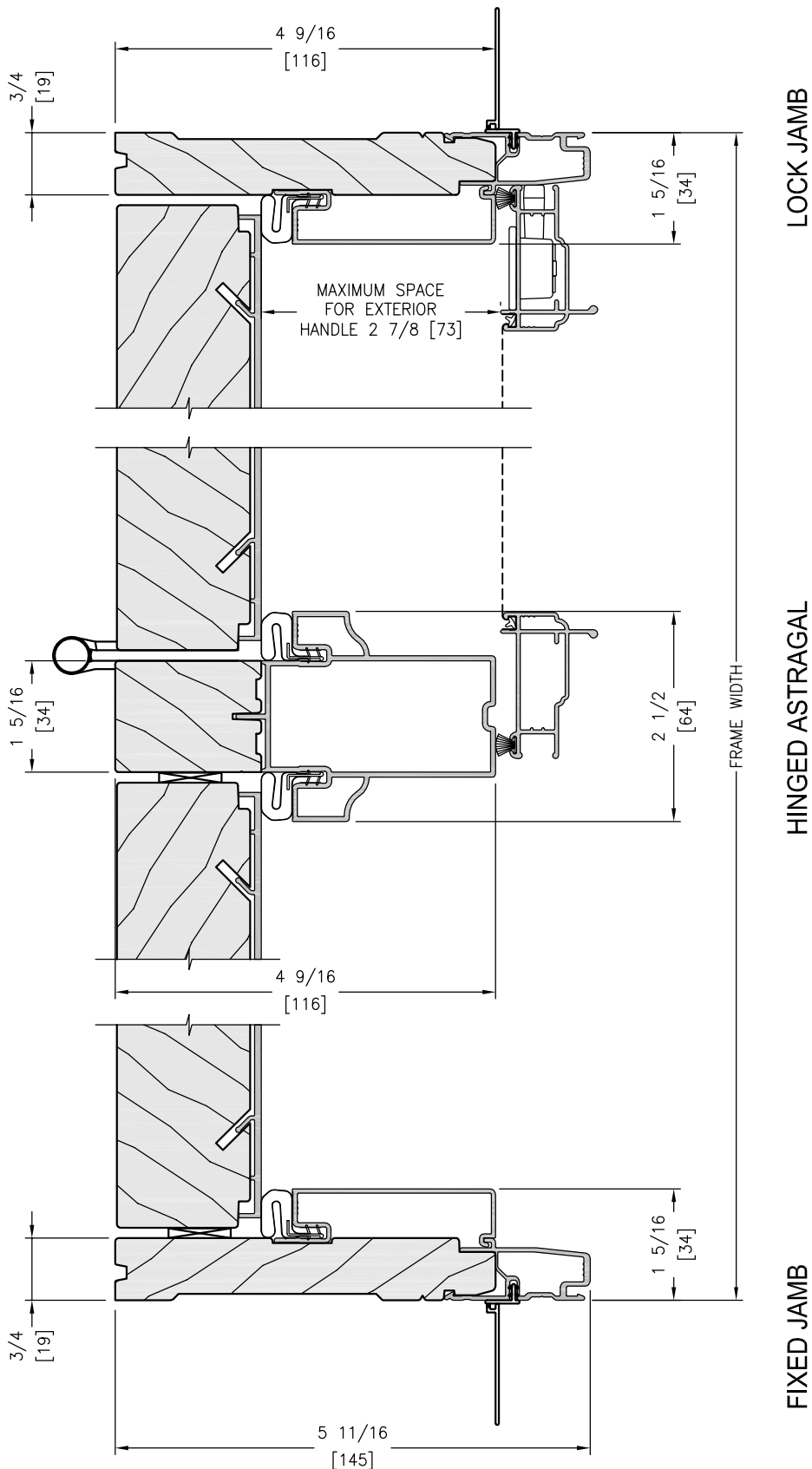
Head and Sill Labels: The head and sill are labeled "HEAD" and "SILL" respectively.

SCALE: 3" = 1'-0"

20OCT2011

SCALE: 6" = 1'-0"

INSWING 2 SLAB HORIZONTAL SECTION

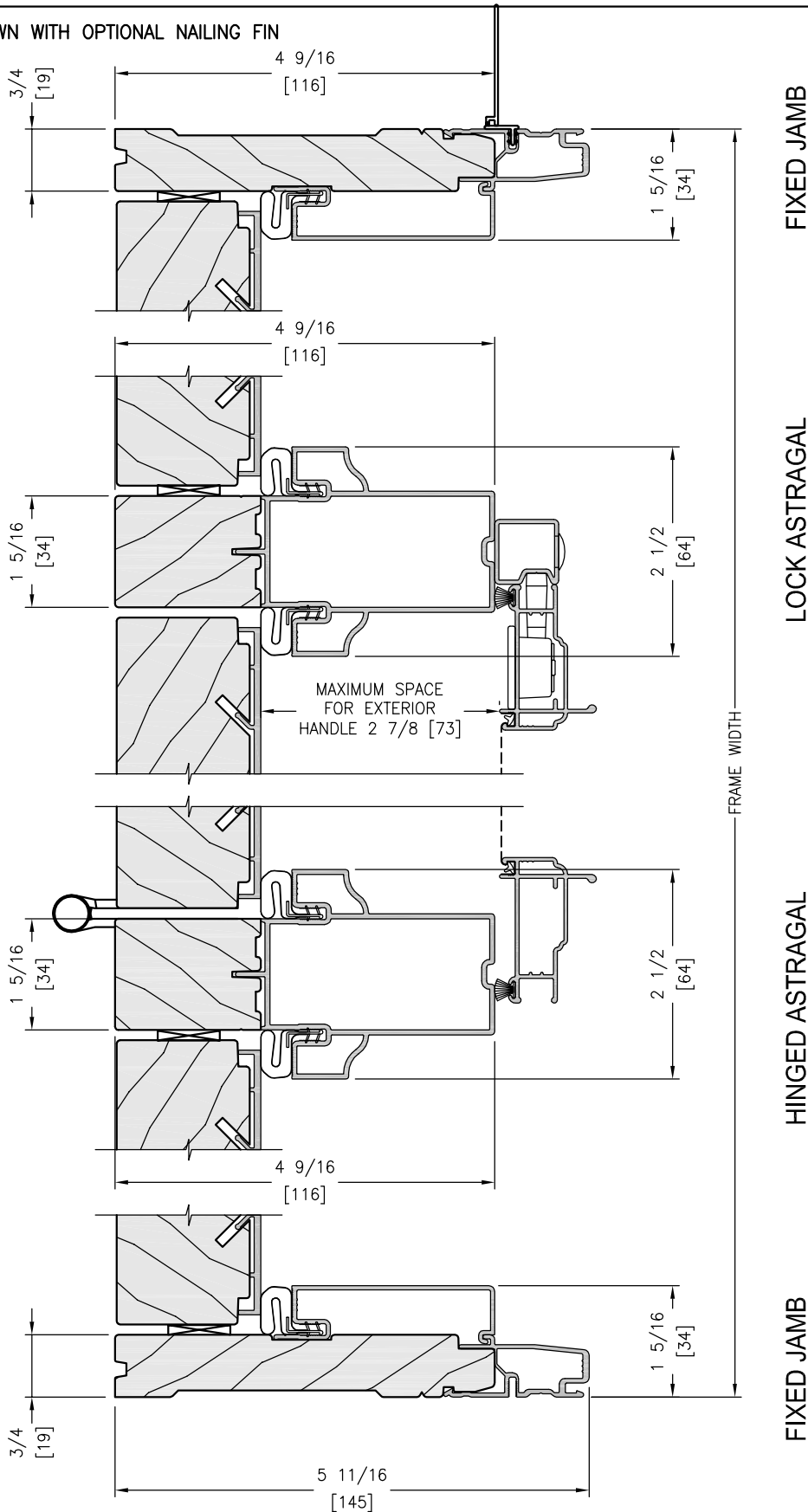


UNIT DRAWN WITH OPTIONAL NAILING FIN

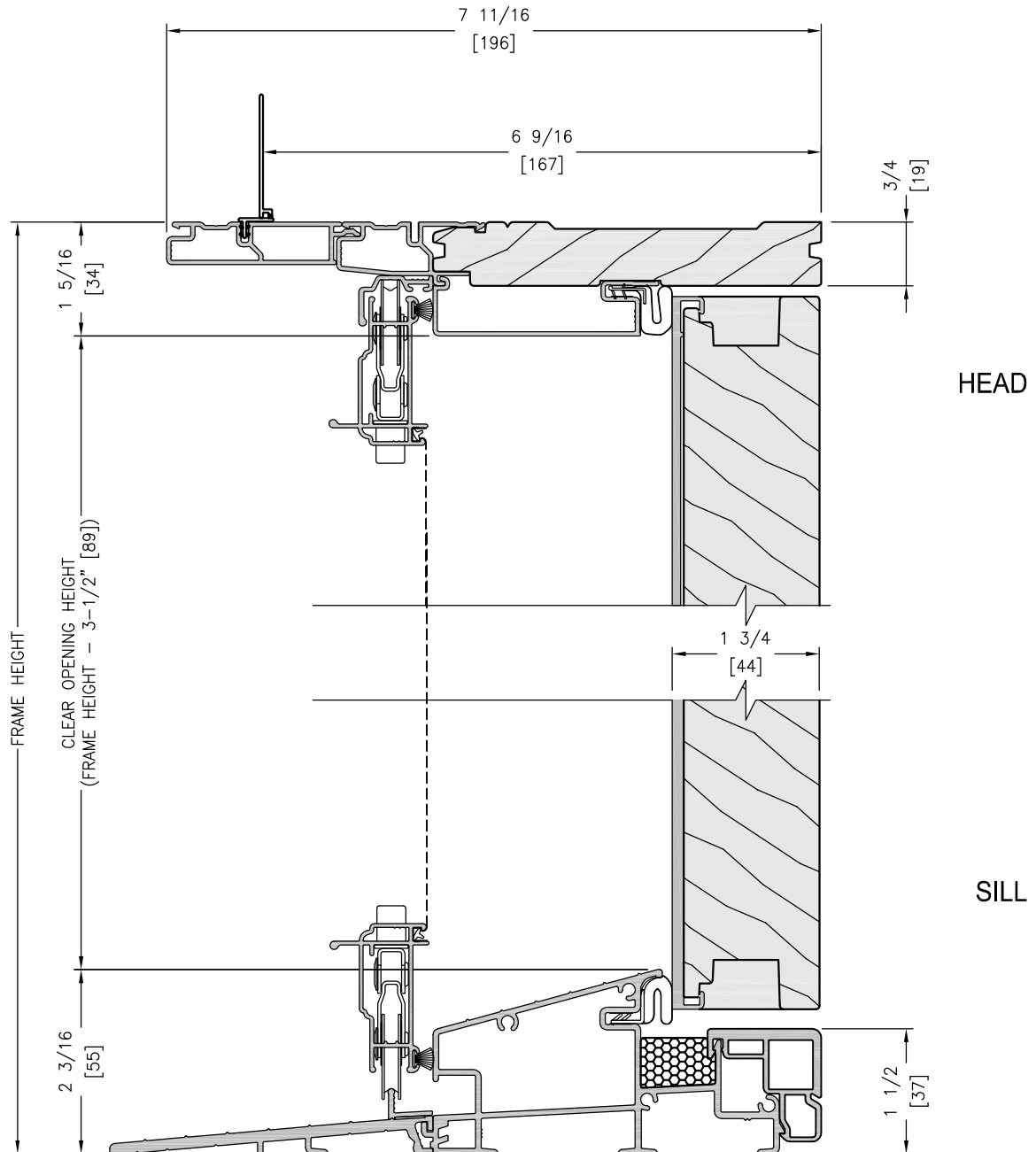
SCALE: 6" = 1'-0"

INSWING 3 SLAB HORIZONTAL SECTION

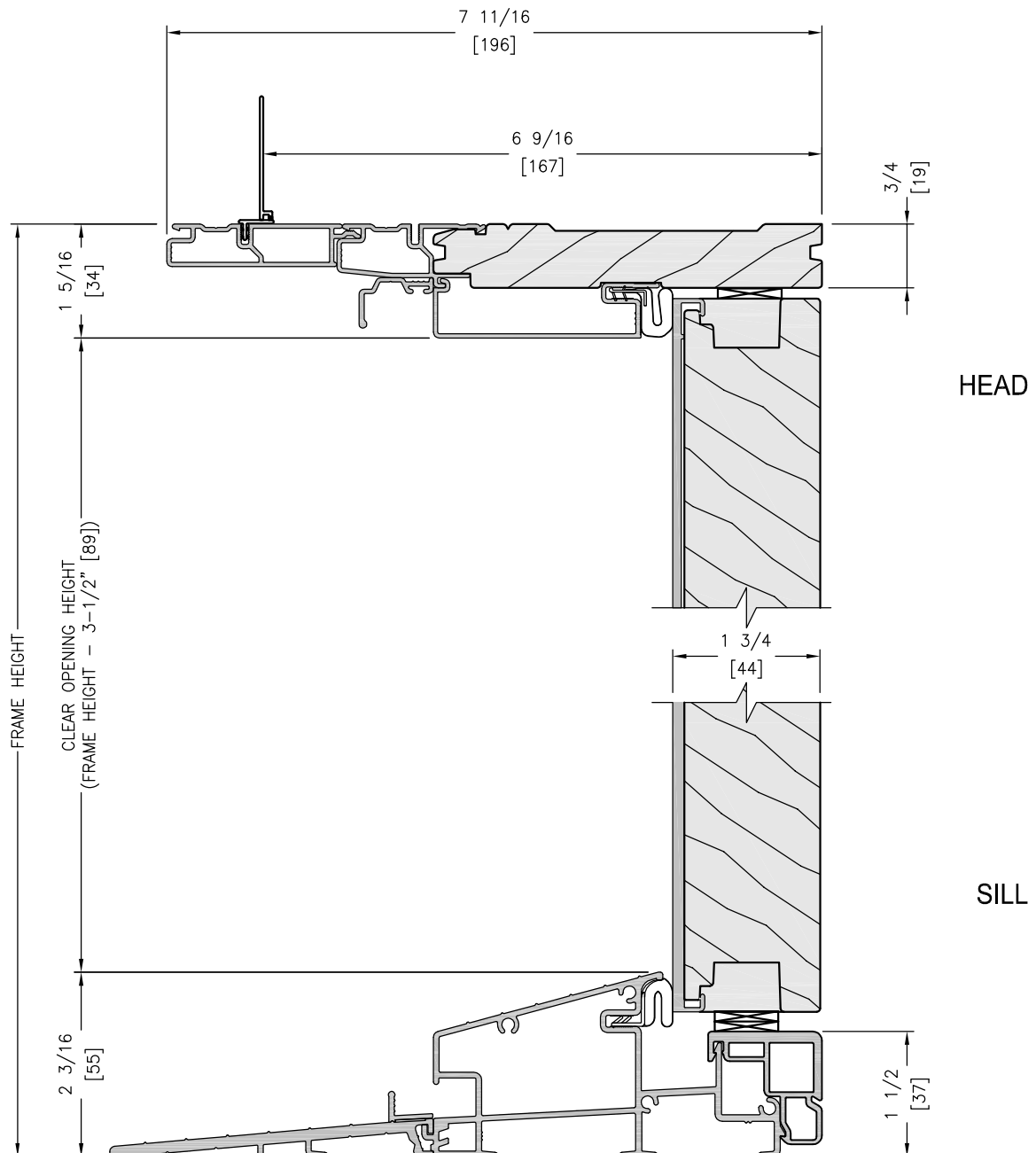
UNITS DRAWN WITH OPTIONAL NAILING FIN



INSWING OPERATING SLAB VERTICAL SECTION

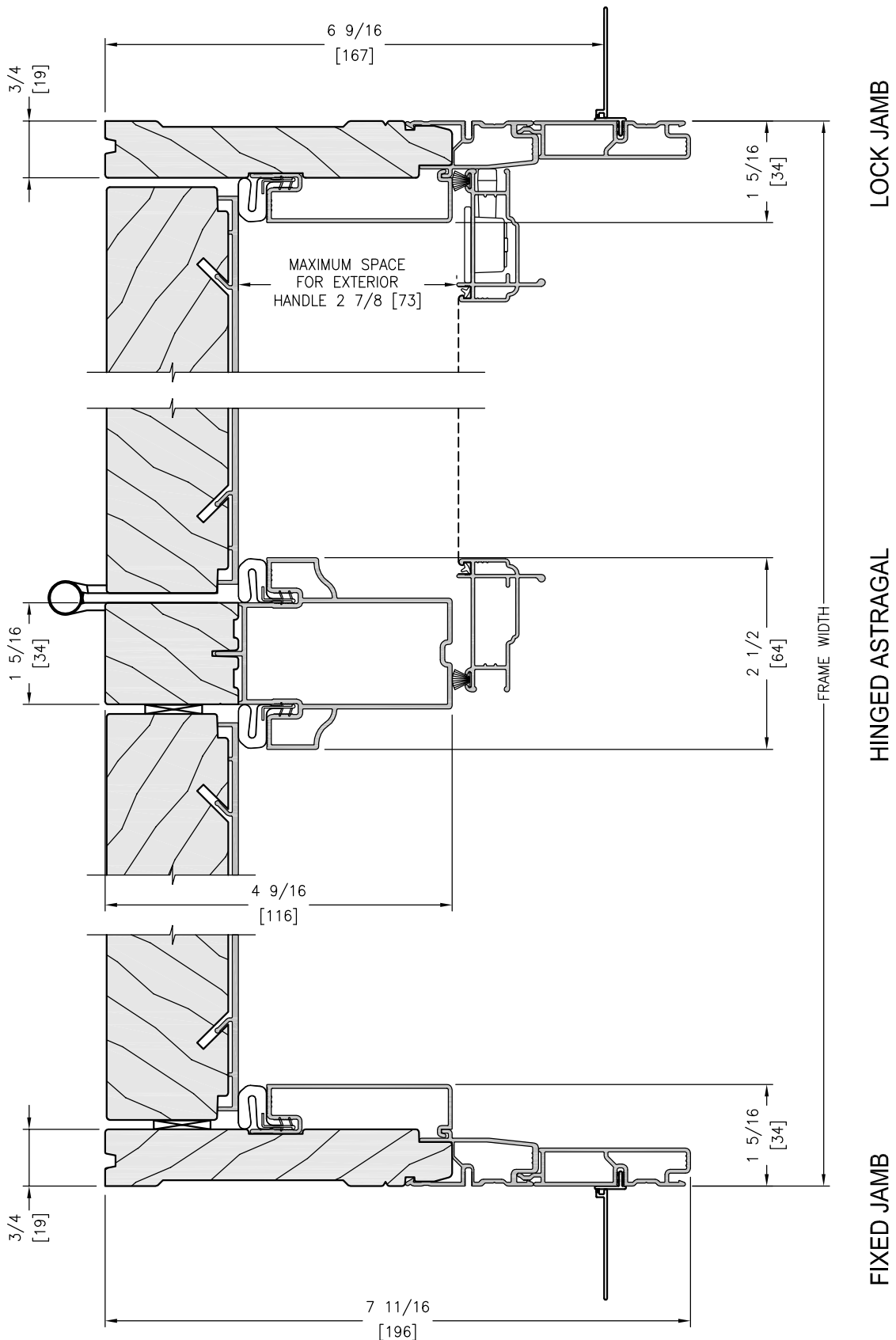


INSWING FIXED SLAB VERTICAL SECTION



SCALE: 6" = 1'-0"

INSWING 2 SLAB HORIZONTAL SECTION

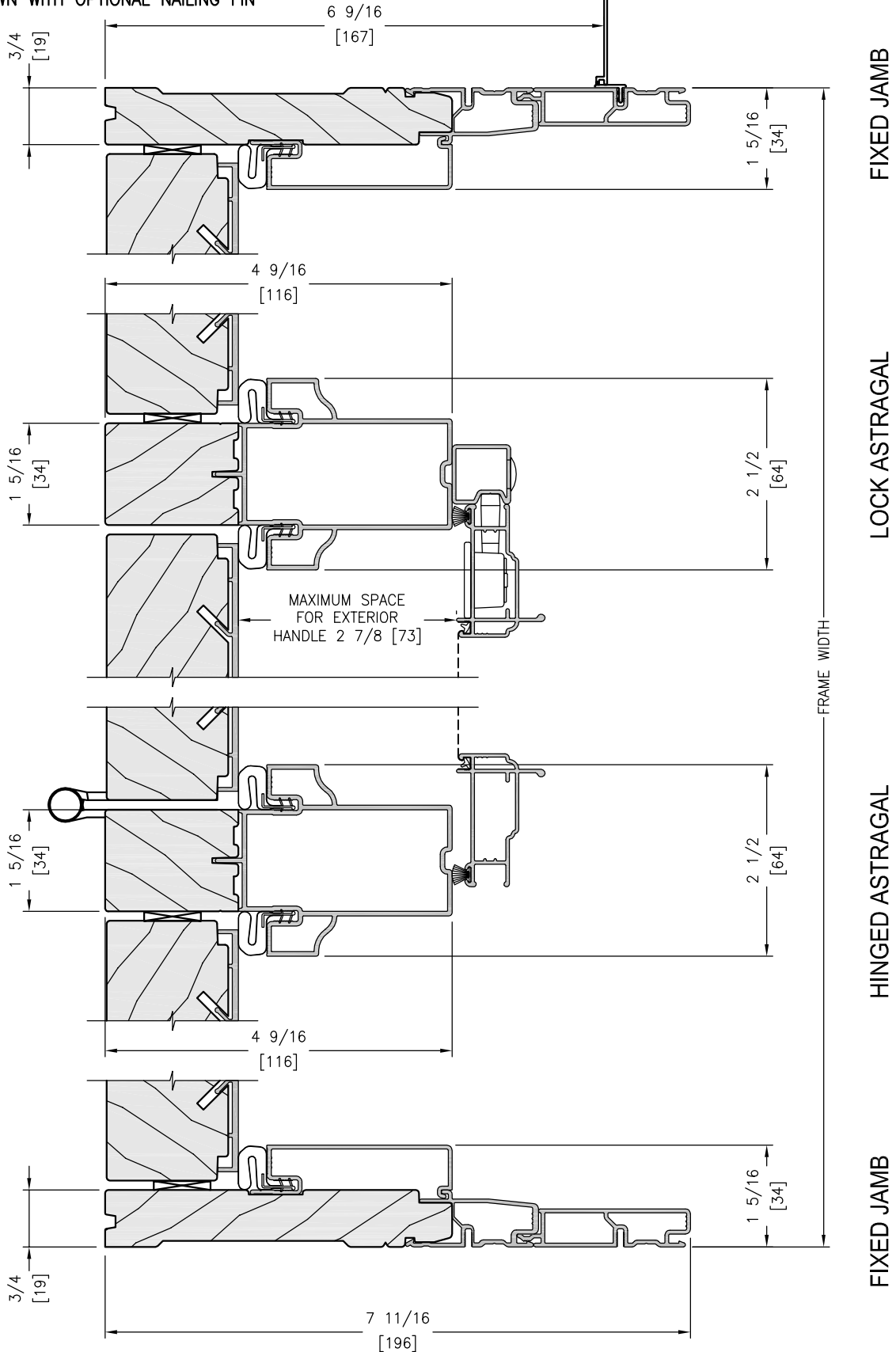


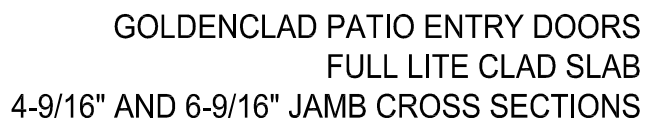
UNIT DRAWN WITH OPTIONAL NAILING FIN

SCALE: 6" = 1'-0"

INSWING 3 SLAB HORIZONTAL SECTION

UNITS DRAWN WITH OPTIONAL NAILING FIN





INSWING 4 SLAB HORIZONTAL SECTIONS

Technical drawings of five door profile cross-sections, showing dimensions in inches and millimeters. The drawings are labeled from left to right: FIXED JAMB, FIXED ASTRAGAL, LOCK ASTRAGAL, HINGED ASTRAGAL, and FIXED JAMB. A vertical dimension line on the right indicates the FRAME WIDTH.

- FIXED JAMB:**
 - Top dimension: $3/4$ [19]
 - Bottom dimension: $3/4$ [19]
 - Width dimension: $4\ 9/16$ [116]
- FIXED ASTRAGAL:**
 - Top dimension: $1\ 5/16$ [34]
 - Bottom dimension: $2\ 1/2$ [64]
 - Width dimension: $4\ 9/16$ [116]
- LOCK ASTRAGAL:**
 - Top dimension: $1\ 5/16$ [34]
 - Bottom dimension: $2\ 1/2$ [64]
 - Width dimension: $4\ 9/16$ [116]
- HINGED ASTRAGAL:**
 - Top dimension: $1\ 5/16$ [34]
 - Bottom dimension: $2\ 1/2$ [64]
 - Width dimension: $4\ 9/16$ [116]
- FIXED JAMB:**
 - Top dimension: $3/4$ [19]
 - Bottom dimension: $5\ 11/16$ [145]
 - Width dimension: $4\ 9/16$ [116]

Additional notes and dimensions:

- MAXIMUM SPACE FOR EXTERIOR HANDLE:** $2\ 7/8$ [73]
- FRAME WIDTH:** Indicated by a vertical dimension line on the right.

Technical drawings of door frame cross-sections for various door types. The drawings show the door profile, frame components, and dimensions in inches and millimeters. A vertical dimension line on the right indicates the 'FRAME WIDTH'.

- FIXED JAMB:** Dimensions include $3/4$ [19] and $6 \frac{9}{16}$ [167].
- FIXED ASTRAGAL:** Dimensions include $1 \frac{5}{16}$ [34], $4 \frac{9}{16}$ [116], and $2 \frac{1}{2}$ [64].
- LOCK ASTRAGAL:** Dimensions include $1 \frac{5}{16}$ [34], $4 \frac{9}{16}$ [116], and $2 \frac{1}{2}$ [64].
- HINGED ASTRAGAL:** Dimensions include $1 \frac{5}{16}$ [34], $4 \frac{9}{16}$ [116], and $2 \frac{1}{2}$ [64].
- FIXED JAMB:** Dimensions include $3/4$ [19], $6 \frac{9}{16}$ [167], and $7 \frac{11}{16}$ [196].

Additional dimensions shown include $2 \frac{7}{8}$ [73] for the maximum space for exterior handle and $1 \frac{5}{16}$ [34] for the door thickness.