

DOORS WITH STYLE.



## EXTERIOR DOORS

GOLDENCLAD® & GOLDENWOOD® ENTRY SYSTEMS



We're ready to help transform your vision into reality.  
**MANUFACTURED SINCE 1961**

# EXTERIOR DOOR INTRODUCTION



## THE RIGHT ENTRY SYSTEM FOR ANY BUILDING STYLE

---

Whether you are renovating, building new, or designing a mid-rise residential, the GoldenClad® & GoldenWood® entry system offers a variety of exterior door styles, colours and designs to compliment every application. Our entry system offers a maintenance-free contemporary profile that will meet most new construction and renovation requirements.



# FEATURES & BENEFITS



- The GoldenClad® Entry System is designed with a maintenance-free aluminum clad frame
- The GoldenWood® Entry System with brickmould is designed to allow for various wood species and stains to choose from
- The GoldenGuard® Sill is a door sealing system that eliminates the need for unsightly door sweeps while incorporating an efficient draining system
- Wood interior frame provides secure anchoring for heavy duty ball bearing hinges
- Compression foam weatherstripping has a soft inner core, wrapped in a tough vinyl skin. It will not shrink or deteriorate with time and it maintains its compression qualities in temperatures to -40°C
- Unique drainage cap allows water to escape but prevents leaves, debris, and insects from blocking the drainage holes

## SIZES

GoldenClad® and GoldenWood® doors are available in a wide range of standard and custom sizes that will meet most new construction and renovation requirements.

Standard Frame Size	Slab Size	Height
Door Slab	2068, 2668, 2868, 21068, 3068	6'8"
	2070, 2670, 2870, 21070, 3070	7'0" (Slab Limitations)
	2080, 2680, 2880, 21080, 3080	8'0"
Sidelite	0868, 1068, 1268	6'8"
	1070, 1270	7'0" (Slab Limitations)
	0880, 1080, 1280	8'0"

Please reference the Sizing & Shapes section on the Professionals page available at [www.goldenwindows.com](http://www.goldenwindows.com) for detailed information regarding rough opening, exact frame sizes, glass size and sizing limitations.

## OPTIONS

Select from 4 standard colours: Golden White, Taupe, Sable, Black

28 optional colours available. Custom colours are available upon request

Available as in-swing (all styles) or out-swing (single door only)

Choose from a variety of aluminum clad, steel or fiberglass slabs

Grilles between glass (GBG) available for added style

Choose from Colonial, Victorian, Muskoka and Custom grille patterns

Various patterned and decorative glass options are available

Exterior brickmould options are available

## FRAME ANATOMY



Wood interior provides secure anchoring for heavy duty ball bearing hinges.

Frame depth: We offer 4-9/16", 6-9/16", 7-1/16" and 7-9/16".

Compression foam weatherstripping has a soft inner core, wrapped in a tough vinyl skin. It will not shrink or deteriorate over time, and it maintains its compression qualities in temperatures to -40°C. It's recognized as the most effective and permanent weatherstripping available today.

Low maintenance extruded aluminum clad offers a weather resistant, beautiful long lasting exterior finish in a variety of colours. Optional natural pine framing system allows for staining or painting to suit your style.

Our frame assembly does not require large and unsightly beads of caulking at all the joints. Our sealing methods remain hidden in the joints, producing a clean and professional finish.

Designed to meet NAFS PG35 performance grade requirements.

Unique drainage cap allows water to escape but prevents leaves, debris and insects from blocking the drainage holes.

# STEEL DOOR ANATOMY



Our steel doors are built for strength, security, and long-lasting performance. Made with durable 24-gauge galvanized steel and reinforced components, they offer reliable protection against forced entry. Low maintenance and available in versatile designs, they're a practical choice for both new builds and renovations.



## Steel skin

- Grade: -G40 hot-dipped galvanized
- 24 gauge steel
- Clean, pre-finished primed white surface

## High density polyurethane foam core

- Density: 2.2 lbs/cu.ft
- Helps insulate against heat loss and heat gain
- Reduces energy usage

## Fire protection option available

- 20-minute positive pressure with hose steam up to 3'0" x 6'8"
- Delivers trusted performance for house-to-garage and interior-to-exterior applications

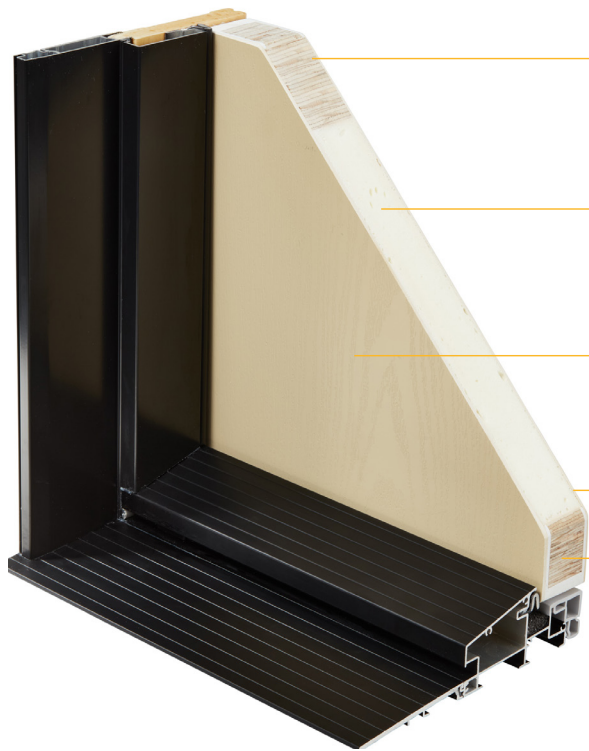
## Wood lock block

- 4" x 12" pine (includes stile thickness) 6'8" and 7'0"
- 4" x 24" pine (includes stile thickness) 8'0"

# FIBERGLASS DOOR ANATOMY



Our fiberglass doors offer a strong blend of durability, energy efficiency, and contemporary style. Designed to handle Canada's tough climate, they resist warping, cracking, and rust while delivering reliable insulation to help lower energy bills. Easy to maintain and available in a wide range of styles and finishes, they provide a smart and attractive option for both new construction and renovation projects.



Uncompromised frame strength and rigidity

- Full length 4" LVL stiles on both hinge and lock sides
- Full length 3" LVL rails on both top and bottom
- Heavy duty frame prevents warping



CFC free, high density polyurethane foam core

- R8 rated
- Sound dampening
- Adds more strength and stability



Factory primer for textured and smooth finish

- Seals the fiberglass
- Locks out moisture
- UV coated



Composite edge perimeter

Tongue in groove joints

- Used on all four corners
- Superior strength and rigidity vs. butt joints or dove tails

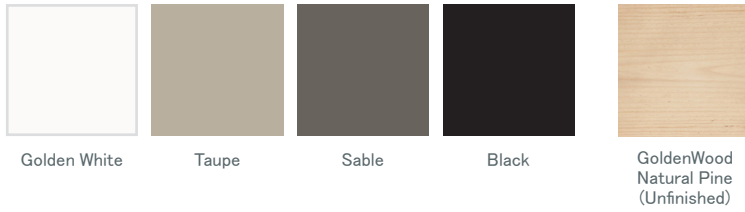
# EXTERIOR DOOR OPTIONS



Make a lasting first impression with our wide selection of doors and sidelites. Choose from durable fiberglass or steel panels and stunning decorative glass to create a look that's uniquely yours. From budget friendly options to custom statement pieces, we make it easy to find the perfect fit for your style and your home.



## STANDARD COLOURS



## COLOUR NOTES

Standard interior entry door finish is natural pine

Custom interior/exterior frame wood species are available upon request

Due to printing limitations, the colours shown may differ from actual colours. Please contact us for exact colour and finish samples.

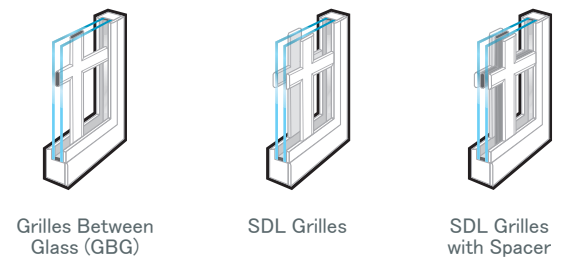
## OPTIONAL COLOURS



## GRILLE PATTERNS

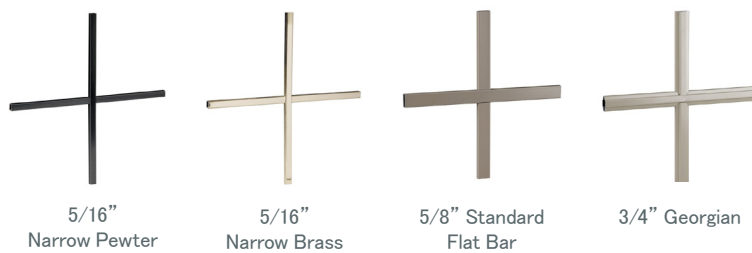


## GRILLE TYPES



## GRILLE OPTIONS

### Grilles Between Glass (GBG):



### Simulated Divided Lite (SDL):



**5/8" Standard Flat Bar & 3/4" Georgian available in:** Golden White, Taupe, Sable, Black

**Split finish also available in:** 5/8" Standard Flat Bar & 3/4" Georgian

# HARDWARE OPTIONS



## MULTI POINT LOCK OPTIONS

A multi point locking system bolts the door into the frame and locks at multiple points at the turn of a key, giving the door a high level of security. Multi point locks are especially beneficial with 8' doors, to prevent warping and maintaining a consistent seal for the entire length of the door. By simply closing the door, the upper and lower 3/4" (20mm) latch bolts will instantly engage. By turning the key from the outside or the knob from the inside, it will engage the 1" central deadbolt and block the top and bottom latch bolts to become a 3-deadbolt locking system.

## FEATURES & BENEFITS

**1** The top and bottom 3/4" (20mm) tempered steel latch bolts always engage behind the keepers upon closing the door:

- Provides more security
- Gives better weather sealing performance
- Helps reduce possible door warpage

No lifting of the handle to engage locking points

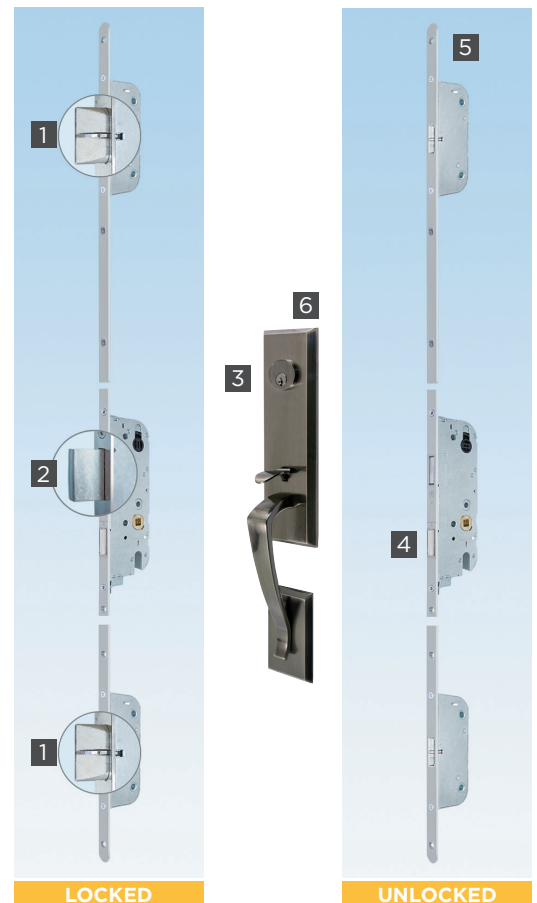
**2** 1" (25mm) central deadbolt

**3** 90° rotation of thumb turn or US-cylinder engages the deadbolt

**4** Non-handed, latch easily reversible

**5** High grade 16mm stainless steel faceplate for higher corrosion resistance. Radius ends for a clean look and easy installation

**6** Available in 45mm (lever handle), 55mm (pull bar) or 60mm (grip set) back set options for 6'8" and 8' doors.



## MULTI POINT GRIP SETS & FEATURES

BERLIN



BERKLEY



- Solid forged brass
- US-cylinder with standard Schlage "C" keyway
- 90° locking with thumb turn
- Non-handed
- Weatherproof gasket
- Easy to install
- For 1-3/4" & 2-1/2" thick doors
- Stainless steel screw kit on interior lever to secure spindle
- Easily converts to inactive handle, using dummy conversion kit
- Compatible with Tedee smart locks

## MULTI POINT HANDLE SETS & FEATURES

VENICE



ALLEGRO



TORINO



ROMA



CAPRI



- The top and bottom 3/4" (20mm) tempered steel latch bolts always engage behind the keepers upon closing the door
  - This provides greater security, better weather sealing performance, and helps to reduce slab warpage
- No lifting of the handle to engage locking points
- 1" (25mm) central deadbolt
- 90° degree rotation of thumb-turn or US-cylinder engages the deadbolt
- Non-handed, latch easily reversible
- High grade 16mm Stainless Steel faceplate for higher corrosion resistance. Radius ends for a clean look and easy installation

## FINISH OPTIONS

GRIP SET

Black

Oil Rubbed  
Bronze

Western  
Pewter

Brushed  
Nickel

HANDLE SET

Black

Oil Rubbed  
Bronze

Western  
Pewter

Brushed  
Nickel

Antique  
Brass

Brass

Roma handle set is not available in Antique Brass and Brass finishes.

Due to printing limitations, the colours shown may differ from actual colours. Please contact us for exact colour and finish samples.

# SMART LOCK HARDWARE



## TEDEE SMART LOCK — SECURITY MEETS SIMPLICITY

---

The Tedee Smart Lock provides a sleek, modern solution for secure and convenient home access. With keyless entry and smartphone control, you can lock and unlock your door with ease.

The optional Tedee Bridge enables remote access, real-time notifications, and activity tracking, so you always know your home is secure — wherever you are. You can also share access digitally with family or guests, eliminating the need for physical keys.

For added flexibility, an optional Tedee Keypad allows for secure PIN-code entry — perfect for households, guests, or situations where smartphone access isn't preferred.

Designed for seamless integration and everyday convenience, the Tedee Smart Lock enhances both security and modern living.

## FEATURES & BENEFITS

---

- Remote access through Tedee application
- Available in black or silver
- Secure virtual key - 256 bit data encryption
- Remote opening of the door
- Lock button
- 3 levels of access, password protected
- Compatible with many smart home systems
- Built-in battery
- Charging via USB cable with micro USB magnetic adapter
- Compatible with our Berkeley, Berlin, and Roma multi point locks
- Tedee Bridge - Plug in device that connects your smart lock to your home wifi via bluetooth network, enabling remote control, real-time monitoring
- Tedee Keypad - Enables keyless entry via a 5-8 digit PIN code or fingerprint



# CONTEMPORARY HARDWARE



## PULL BAR HANDLES

Perfect for large entry doors and terrace systems, pull bars offer a refined, contemporary solution for modern entry systems. Designed to make a statement, these oversized handles combine clean lines with premium materials to enhance the overall look and feel of your door.

Available in a variety of lengths, finishes, and configurations, pull bars can be tailored to suit both modern and traditional home styles. Their durable construction ensures long-lasting performance, while the ergonomic design provides a comfortable and secure grip for everyday use.

## FEATURES & BENEFITS

- Manufactured from high-quality stainless steel for superior durability
- Corrosion-resistant, ideal for exterior applications and harsh climates
- Multiple contemporary design options
- Offered in single or double pull bar configurations
- Includes fastening kits for a secure installation
- Choice of stainless steel or matte black finishes
- Available in multiple lengths and fixing centres to suit various door sizes
- Ensures long-term performance with minimal maintenance

ROUNDED  
45°



SQUARE  
STRAIGHT



ROUNDED  
STRAIGHT



# GOLDENCLAD® & GOLDENWOOD® TERRACE DOORS



GoldenClad® and GoldenWood® Terrace doors offer a wide range of designs to suit various styles and budgets. Available in wood or aluminum clad frames with durable steel, fiberglass, or aluminum clad panels and a natural pine interior, they bring in abundant natural light while maintaining excellent energy efficiency.



## FEATURES & BENEFITS



- The GoldenClad® Terrace Entry System is designed with a maintenance-free aluminum clad frame
- The GoldenWood® Terrace Entry System with brickmould is designed to allow for various wood species and stains to choose from
- The GoldenGuard® Sill is a door sealing system that eliminates the need for unsightly door sweeps while incorporating an efficient draining system
- Available in dual and triple glaze for increased thermal and acoustic performance
- Available with two, three or four panels
- Available as in-swing only
- Compression foam weatherstripping has a soft inner core, wrapped in a tough vinyl skin. It will not shrink or deteriorate with time and it maintains its compression qualities in temperatures to -40°C
- Unique drainage cap allows water to escape but prevents leaves, debris, and insects from blocking the drainage holes

## SIZES

GoldenClad® and GoldenWood® Terrace Patio Doors are available in a wide range of standard and custom sizes that will meet most new construction and renovation requirements.

Standard Configurations	Widths (min - max)	Height (min - max)
Two Panel Doors	62-13/16" (1596mm) - 74-13/16" (1901mm)	6'8" 7'0" * 8'0"
Three Panel Doors	94-3/16" (2392mm) - 112-3/16" (2849mm)	6'8" 7'0" * 8'0"
Four Panel Doors	125-1/2" (3188mm) - 141-1/2" (3594mm)	6'8" 7'0" * 8'0"

\*Slab limitations. Speak to your sales representative for details.

Please reference the Sizing & Shapes section on the Professionals page available at [www.goldenwindows.com](http://www.goldenwindows.com) for detailed information regarding rough opening, exact frame sizes, glass size and sizing limitations.

## PERFORMANCE

### CLAD/WOOD TERRACE DOOR

Class LC-PG35: Size tested 2849 x 2478 mm (112.2 x 97.6)–Type SHD  
 Positive Design Pressure = 1680 Pa (35 psf)  
 Negative Design Pressure = -1680 Pa (-35 psf)  
 Water Penetration Resistance Test Pressure = 260 Pa (5.25 psf)  
 Canadian Air Infiltration/Exfiltration = A3 Level (0.892/0.921m<sup>3</sup>/h/m)

For additional professional details and performance information, including the most current energy efficiency data including Energy Ratings, U-Values, R-Values and Solar Heat Gain Coefficient numbers, please visit [www.goldenwindows.com](http://www.goldenwindows.com).

## OPTIONS

Available in wood or aluminum clad frames with durable steel, fiberglass, or aluminum clad panels and a natural pine interior

Available in both the traditional (wide rail) and the contemporary (narrow rail) designs

Available in a variety of hinging options including center-hinged

Select from 4 standard, 28 optional or unlimited custom colours

Multi point locking hardware available in a variety of styles and finishes. Required on all 8' door heights.

Grille options include: grilles between glass (GBG) and simulated divided lights (SDL)

Choose from Colonial, Victorian, Muskoka and Custom grille patterns



# GOLDENVINYL® SLIDING PATIO DOORS



The GoldenVinyl® Sliding Patio Doors are designed and engineered to be unlike any other in the industry, featuring reinforced construction and energy efficient performance. A multi-chambered structure combined with a comfort enhance weather stripping system increase the performance value of the door. Our patio door features premier handle sets and offers an optional footbolt to ensure the sliding door is not easily opened when engaged.

## FEATURES & BENEFITS



Available in dual and triple glaze for increased thermal and acoustic performance

Available with two, three or four panels

Standard Heights: 81-1/2" and 95-1/2"; \*Retrofit Height: 79-1/2"

For increased energy efficiency, Low E glass and argon gas filling is standard

Warm Edge Technology combined with Superspacer® improves the overall U-Value and energy ratings

Low-maintenance, extruded vinyl offers a weather-resistant, beautiful exterior finish

Standard Frame Depth: 5-7/8"

Jamb extensions are available as primed, finger jointed pine, or cellular PVC

## SIZES

GoldenVinyl® patio doors are available in a wide range of standard and custom sizes that will meet most new construction and renovation requirements.

Exact Frame Size	Width (min - max)	Height (min - max)
Patio Doors	59-1/2" - 189-1/8" 1511.3mm - 3625.9mm	81-1/2" - 95-1/2" 2070.1mm - 2425.7mm
Patio Door Transom	59-1/2" - 189-1/8" 1511.3mm - 3625.9mm	11-13/16" - 47-1/4" 300mm - 1200mm

Please reference the Sizing & Shapes section on the Professionals page available at [www.goldenwindows.com](http://www.goldenwindows.com) for detailed information regarding rough opening, exact frame sizes, glass size and sizing limitations.

\*Retrofit sizes are available, starting at 58-1/2" width. Contact your sales representative for details and availability.

## HARDWARE



White



Black



Sable



Taupe

## OPTIONS

Select from 4 standard colours: Golden White, Taupe, Sable, Black

28 optional colours available. Custom colours are available upon request

Grilles between glass (GBG) available for added style

Choose from Colonial, Victorian, Muskoka and Custom grille patterns

Standard Patio Hardware: Interior Locking Only

Upgraded Patio Hardware: Interior Locking, Exterior Keyed

Footbolt available for additional security

Exterior brickmould options are available

Patio door screen made to match chosen exterior colour

## PERFORMANCE

### VINYL SLIDING PATIO DOOR

Class R-PG50: Size tested 1800 x 2060 mm (71 x 81)-Type SD  
 Positive Design Pressure = 2400 Pa (50 psf)  
 Negative Design Pressure = -2400 Pa (-50 psf)  
 Water Penetration Resistance Test Pressure = 400 Pa (8 psf)  
 Canadian Air Infiltration/Exfiltration = A3 Level

For additional specifications and performance information, including the most current energy efficiency data including Energy Ratings, U-Values, and Solar Heat Gain Coefficient numbers, please visit [www.goldenwindows.com](http://www.goldenwindows.com).

# GOLDENCLAD® & GOLDENWOOD® SLIDING PATIO DOORS



A sliding patio door is an excellent choice for those who seek the stability, strength and beauty of a sliding door. With the warmth and elegance of a natural wood interior and the added luxury and protection of a colour matched aluminum cladding on the exterior, this product will exceed your performance expectations. An extruded layer of aluminum cladding encases the exterior, protecting the engineered wood core and keeping it free from deterioration.

# FEATURES & BENEFITS



Engineered wood featuring a durable structural core that ensures your sliding patio door will last a long time

Available in both the traditional (wide rail) and the contemporary (narrow rail) designs

Permanently lubricated tandem rollers to ensure a smooth gliding door on a stainless steel track

A continuous plane of weatherstripping results in a tight seal, reducing air infiltration and improving the overall energy efficiency

The screen features a full height integrated pull handle with four separate ball bearing, fully adjustable, plated steel roller mechanisms for smooth operation (not shown)

## SIZES

GoldenClad® and GoldenWood® sliding patio doors are available in a wide range of standard and custom sizes that will meet most new construction and renovation requirements.

Standard Double Sliding Door (OX or XO) Widths	59" (1498mm), 70-15/16" (1802mm), 95" (2412mm)
Standard Quad Sliding Door (OXXO) Widths	117-13/16" (2992mm), 141-3/4" (3600mm), 189-3/4" (4820mm)
Standard Heights	79-3/8" (2016mm), 82-3/8" (2093mm), 95-3/8" (2423mm)

\*Custom sizes available upon request.

Please reference the Sizes & Shapes section of the window product page available at [www.goldenwindows.com](http://www.goldenwindows.com) for detailed information regarding rough opening, exact frame sizes, glass size and sizing limitations.

## HARDWARE



## OPTIONS

Select from 4 standard, 28 optional or unlimited custom colours

Multiple hardware finishes to choose from

Standard Patio Hardware: Interior Locking Only

Upgraded Patio Hardware: Interior Locking, Exterior Keyed

Available in GoldenWood® with a natural pine exterior

Grille options include: grilles between glass (GBG) and simulated divided lights (SDL)

Choose from Colonial, Victorian, Muskoka and Custom grille patterns

Optional foot bolt for added security

## PERFORMANCE

### CLAD/WOOD SLIDING PATIO DOOR

Class LC-PG30: Size tested 2412 x 2423 mm (94.96 x 95.39)-Type SD  
 Positive Design Pressure = 1440 Pa (30 psf)  
 Negative Design Pressure = -1440 Pa (-30 psf)  
 Water Penetration Resistance Test Pressure = 400 Pa (8 psf)  
 Canadian Air Infiltration/Exfiltration = A3 Level (0.892/0.921m<sup>3</sup>/h/m)

### CLAD/WOOD SLIDING PATIO DOOR SIDELITE

Class LC-PG30: Size tested 1251 x 2423 mm (49.25 x 95.39)-Type SLT  
 Positive Design Pressure = 1440 Pa (30 psf)  
 Negative Design Pressure = -1440 Pa (-30 psf)  
 Water Penetration Resistance Test Pressure = 510 Pa (11 psf)  
 Canadian Air Infiltration/Exfiltration = A3 Level (0.443/0.433m<sup>3</sup>/h/m)

For additional professional details and performance information, including the most current energy efficiency data including Energy Ratings, U-Values, R-Values and Solar Heat Gain Coefficient numbers, please visit [www.goldenwindows.com](http://www.goldenwindows.com).

# GARAGE DOOR FRAMES



Golden Windows offers extruded vinyl or wood garage door frames with optional brickmould. The sizing of rectangular garage door frames range from a nominal size of 8' x 7' to a maximum of 18' x 8'. We also offer camber top garage door frames in vinyl with nominal sizing from 8' x 8' to 16' x 8' with a standard radius.

## OPTIONS

Both vinyl and wood frames are pre-cut and shipped ready to assemble

Vinyl garage frames are available as rectangular or camber top

Wood garage frames are available as rectangular only

Optional brickmould can be added to either vinyl or wood garage frames

Available sizes:

- Vinyl rectangular frame - Up to 10ft height & 18ft width
- Vinyl cambertop frame - Up to 10ft height & 16ft width
- Wood rectangular frame - Up to 8ft height & 18ft width
- Height and width rules apply. Contact your sales rep for details.

Available in finger jointed pine or white vinyl

Vinyl frames can be ordered in optional Gentek colours



# FIRE RATED DOORS



Golden Windows offers both 20-minute and 90-minute fire rated doors. 20-minute fire rated doors are typically used for garage to house applications. 90-minute fire rated doors provide superior fire resistance for commercial or high-safety residential needs, featuring steel-edge construction and required steel frames.

## FEATURES & BENEFITS



Constructed from 24-gauge steel

Premium fire door resists cracking, splitting, warping, twisting, rotting, and corrosion

Full steel-edge perimeter achieves a Grade 40 Security Rating (90-Minute)

While 20-gauge hinge reinforcements and a polyurethane foam core provide excellent durability and insulation

Certified for 90-minute fire protection, it also features a baked-on polyester primer that accepts exterior-grade latex paint.

Multiple slab styles available

Jamb Depths Available From: 4-1/2" to 12-1/2" (Adjustable up to 1" varying jamb depth)

Available Widths: 2'6" | 2'8" | 2'10" | 3'0"

Available Height: 6'8" | 7'0" | 8'0"



### Polyurethane Foam Core (20 & 90-Minute)

A layer of polyurethane foam bolsters noise suppression and delivers insulation up to 4x better than typical wood doors. It also serves as a unifying agent, anchoring all interior components securely for added resilience.



### Adjustable Hinge Plate (90-Minute)

A specialized hinge plate is embedded in the door slab, allowing convenient adjustments in any direction without taking the door off the frame. A simple screwdriver is all that's needed for quick modifications at any point.



### Reinforced Lock Block Area (90-Minute)

Incorporating a composite lock block helps ensure secure hardware installation and strengthens the doors overall structure. Compared to wood, the reinforced block delivers superior screw-holding capacity.



### Full Steel-Edge Perimeter (90-Minute)

With a steel-edge design, those doors surpass the toughest forced-entry benchmarks in the industry. To achieve a Grade 40 certification, a door must endure over seven blows from a 100lb test weight.

GRADE 40  
SECURITY  
RATING

Golden Windows is focused and committed to protecting our environment. Our manufacturing team is constantly looking for ways to maximize resources and reduce waste, while providing our customers with long lasting, energy efficient windows and doors. Golden Windows is a proud ENERGY STAR® participant, offering the benefits of energy savings, improved interior comfort, additional protection of your home's interior and reduced condensation.

## GOLDENWINDOWS

In 1961, Golden Windows began as a small Kitchener millwork plant with only a handful of employees under the name Golden Triangle Windows. Over the six decades the company has been in operation, much has changed, both in consumer taste and window innovation, but it remains a family owned and operated organization. By focusing on the needs and desires of our customers, the business has continued to grow and expand. Golden Windows is now an integrated designer, manufacturer and distributor of quality windows and doors servicing Ontario, portions of the United States and other countries such as the Cayman Islands, Great Britain and Japan.

Golden Windows is a reliable source for high quality products manufactured at our facility in Kitchener, Ontario. We combine a highly skilled, craftsman oriented workforce with the latest technology to produce aluminum, wood and vinyl windows and doors that exceed your need for energy efficiency, natural air flow and easy cleaning and maintenance. This is done by partnering with our suppliers and quality builders, renovators and dealers to satisfy your every need.

By being one of only a few window and door companies that have obtained the ISO 9001 designation, we are able to consistently provide exceptional lead times and on-time delivery of these superior products. By believing in a philosophy of continuous improvement, our products have been designed to provide you with trouble-free performance. We are confident that you will enjoy your Golden Windows for many years to come.

Golden Windows has retail locations in Kitchener, London and Kanata. Our products are also available through quality builders, renovators and dealers.

### KANATA SHOWROOM

1112 March Road, Kanata ON K2W 1B9  
Phone: 613-592-9111  
Fax: 613-592-0888

### KITCHENER HEAD OFFICE AND SHOWROOM

300 Bridge Street East, Kitchener ON N2K 2Y5  
Phone: 519-579-3810 or 1-800-265-2290  
Fax: 519-579-8900

### LONDON SHOWROOM

309 Exeter Road, London ON N6L 1C1  
Phone: 519-652-1677  
Fax: 519-652-9110

### SERVICE DEPARTMENT

300 Bridge Street East, Kitchener ON N2K 2Y5  
Phone: 519-772-0526 or 1-877-293-7850



[www.goldenwindows.com](http://www.goldenwindows.com)

